

Grundfos EDIFACT D.96.A

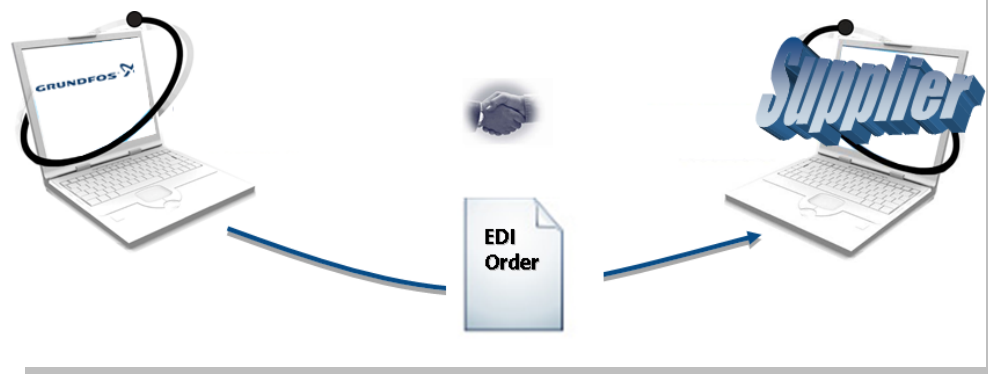
Title **ORDERS - Documentation**

Create Date 01-03-2003

Last Update 31.10.2014, version 2.08

Author Grundfos EDI Team

Owner Grundfos Group EDI Team



Prologue

Introduction The present document defines the EDIFACT **ORDERS** documentation for Grundfos suppliers – the format in which Grundfos expect to receive when exchanging EDI **ORDERS** documents from Grundfos supplier partners.

Purpose The purpose is to enable Grundfos supplier partners to apply to the EDI standard used when exchanging documents with Grundfos.

Target group EDI consultants implementing the technical EDI set-up at the Grundfos supplier partner.

About document The document takes basis in the structure of EDIFACT D96A, see figure “Order structure”. For each segment in the figure a table lists the sub-element code, sub-element name, EDIFACT notation and Grundfos specific description. For each segment an example is given. At the last page an example of an EDIFACT **ORDERS** is given.

Change log

Date	Author	Description	Ver.
31-10-14	HISZ	Added new Sender/ Receiver IDs for GCP,GOE	2.08
09-09-14	HISZ	Added new Sender/ Receiver IDs for GDK	2.07
14-03-13	HISZ	Added new Sender/ Receiver IDs for MXP,GSI,GMS,PPU,YCC,GMA,GDS	2.06
27-01-12	JAR	EAN location for GBJ updated from 5790000022984 to 5708601000836 in UNB	2.05
22-12-09	JAR	Unloading point added in NAD segment field C080-3036	2.04
17-02-09	JAR	EAN locations added in UNB specifications	2.03
21-07-08	JAR	EAN locations added in UNB specifications	2.02
22-02-07	JAR	Additional company information added in NAD - segment	2.01
16-06-06	JAR	Document branded and further: UNB segment added sender ID for Grundfos companies BGM segment added 4343 Response type, coded For RFF (ADE) + RFF (CO) and DTM segments: Comments has been stressed LIN segment added: 5495 Sub-line indicator 1082 Line item number	2.00

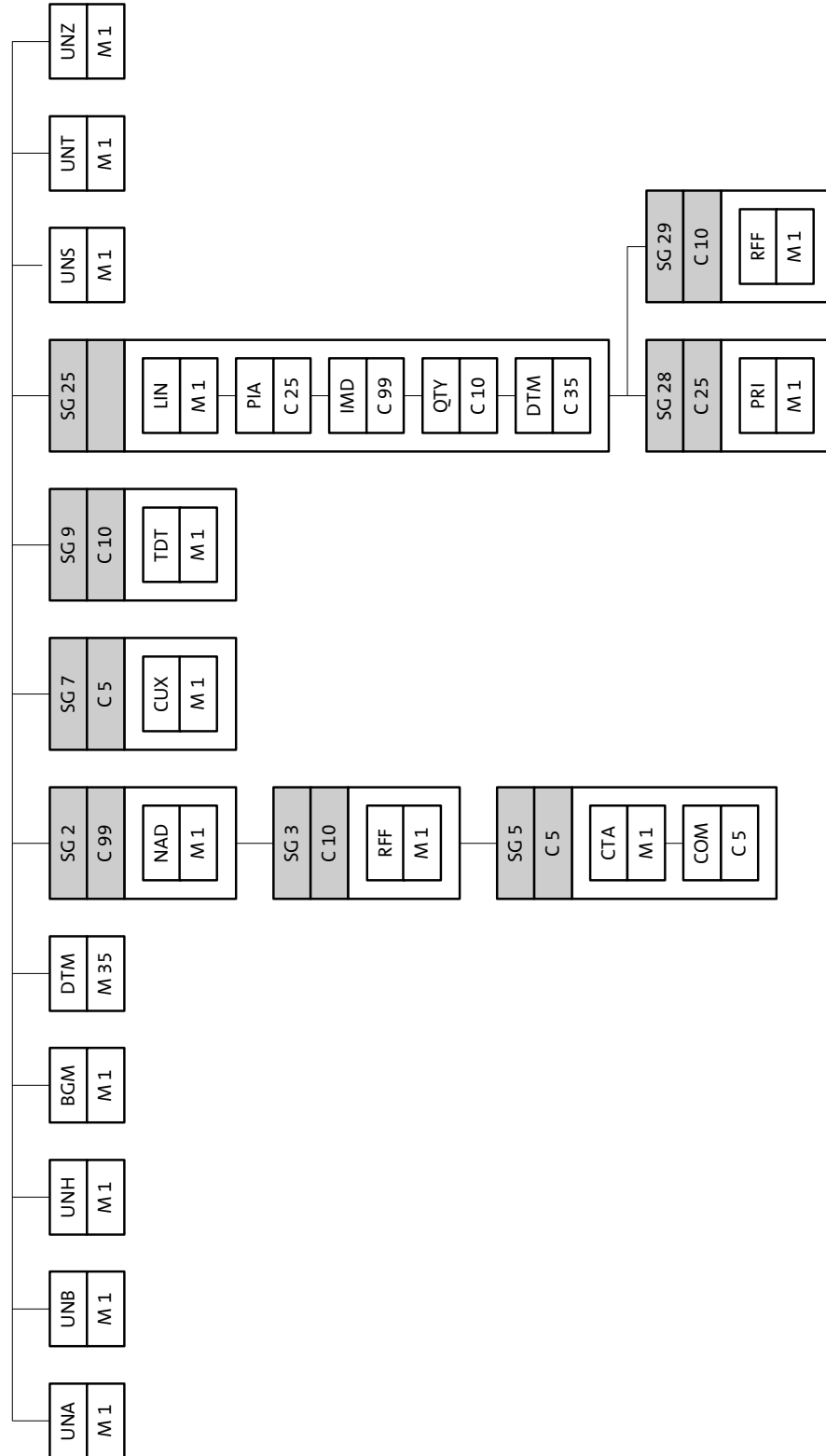
22-04-99	FFR	Document created	1.00
----------	-----	------------------	------

Content

GRUNDFOS EDIFACT D.96.A	1
PROLOGUE	2
CONTENT	4
GRUNDFOS EDIFACT – ORDER STRUCTURE	5
UNA - SERVICE STRING ADVISE	7
UNB - INTERCHANGE HEADER (ENVELOPE)	8
UNH - MESSAGE HEADER	10
BGM - BEGINNING OF MESSAGE	11
DTM - DATE/TIME/PERIOD	12
NAD- NAME AND ADDRESS	13
RFF – REFERENCE (ADE)	15
CTA – CONTACT INFORMATION	16
COM – COMMUNICATION CONTACT	17
CUX – CURRENCIES	18
TDT– DETAILS OF TRANSPORT	19
LIN - LINE ITEM	21
PIA - ADDITIONAL PRODUCT ID	22
IMD - ITEM DESCRIPTION	24
QTY - QUANTITY	25
DTM - DATE/TIME/PERIOD	26
PRI - PRICE DETAILS	27
RFF – REFERENCE (CO+AAL)	28
UNS - SECTION CONTROL	29
UNT- MESSAGE TRAILER	30
UNZ - INTERCHANGE TRAILER	31
ORDER MESSAGE EXAMPLE	32

Grundfos EDIFACT – Order structure

Branching diagram of Order message



Communication information Grundfos supports following communication methods:

- VAN
- FTP

FTP is the preferred communication protocol
FTP instructions will be provided on individual basis.

The VAN mailbox's are located at **Information Exchange** and are as follows:

Test environment: DKGRFOS/GBJ002

Production environment: DKGRFOS/GBJ028

UNA - Service string advise

Description To define the characters selected for use as delimiters and indicators in the rest of the interchange

Definitions

Element	EDIFACT	Grundfos specifics
Component data element separator	M an..1	Constant = : (colon)
Data element separator	M an..1	Constant = + (plus sign)
Decimal notation	M an..1	Constant = , (comma) or . (period)
Release indicator	M an..1	Constant = ? (question mark)
Reserved	M an..1	Blank / Space
Segment terminator	M an..1	Constant = ' (apostrophe)

Notation in EDIFACT column:

- M= Mandatory and C= Conditional
- AN=alphanumeric and N=numeric
- X= X char and ..X=max X chars

Example:

M an..15 = Field is **M**andatory, **alpha numeric** and max **15** char

Example

Example:

UNA:+.?'

UNB - Interchange header (envelope)

Description To identify and specify the sender and receiver of a message.

Definitions

	Element	EDIFACT	Grundfos specifics
S001	Syntax identifier	M	
0001	Syntax identifier	M a..4	UNOC
0002	Syntax version number	M n..1	3
S002	Interchange sender	M	
0004	Sender identification	M an..35	ID's, see table below
0007	Partner identification code qualifier	C an..4	14 = EAN number
0008	Address for reverse routing	C an..14	Not used
S003	Interchange recipient	M	
0010	Recipient identification	M an..35	XXXXXXXXXXXXXXXXXXXX.....
0007	Partner identification code qualifier	C an..4	XXXX
0014	Routing address	C an..14	Not used
S004	Date/time of preparation	M	
0017	Date	M n..6	YYMMDD
0019	Time	M n..4	HHMM
0020	Interchange control reference	M an..14	Unique reference assigned by sender
S005	Recipient's reference password	C	
0022	Recipient's reference / password	M an..14	Not used
0025	Recipient's reference / password qualifier	C an..2	Not used
0026	Application reference	C an..14	ORDERS
0029	Processing priority code	C a..1	Not used
0031	Acknowledgement request	C n..1	Not used
0032	Communications agreement	C an..35	Not used
0035	Test indicator	C n..1	1 = test, blank = production.

Example

Example:

**UNB+UNOC:3+5708601000836:14+5790000274017:14+990419:1039+10++
ORDERS+++1'**

**Table of
Grundfos
Sender/receiver
ID's**

!! IMPORTANT !!

Company	Short	Test ID	Production ID
GRUNDFOS Pumps Suzhou Ltd	GPC/CN	5708601000614	5708601000621
Grundfos A/S	GBJ/DK	5708601000836	5708601000126
Grundfos Sensor	SEN/DK	5708601000812	5708601000553
Grundfos Bio Booster A/S	GBB/DK	5708601000744	5708601000515
Grundfos Holding A/S	GMA/DK	5708601000775	5708601000461
Grundfos SC Denmark	GDK/DK	5708601000768	5790000010639
Grundfos Corporate Purchase AG	GCP/CH	5708601001857	5708601001840
Grundfos Operations Europe	GOE/DK	5708601001833	5708601001826
Grundfos Manufacturing Ltd.	GBW/GB	5708601000560	5708601000485
Grundfos Environment Finland Oy Ab	GEF/FI	5708601000577	5708601000355
Pompes Grundfos S.A.S	PGF/FR	5708601000683	5708601000423
Grundfos Pumpenfabrik GmbH	GWP/DE	5708601000645	5708601000065
Grundfos Distribution Service BV	GDS /NL	5708601000768	5708601000362
Grundfos Hungary Manufacturing Ltd.	GMH/HU	5708601000652	5708601000409
Bombas GRUNDFOS de Mexico	GMX/MX	5708601000669	5708601000676
Bombas GRUNDFOS de Mexico	MPX/MX	5708601000669	5708601000676
Grundfos Russia Manufact	GMR/RU	5708601000591	5708601000737
Grundfos Serbia d.o.o	GMS/RS	5708601001680	5708601001635
GRUNDFOS (Singapore) Pte. Ltd	GSI/SG	5708601001697	5708601001222
Grundfos Handels AG Taiwan Branch	GTW/TW	5708601000638	5708601000331
Grundfos CBS Inc.	GCB/US	5708601000690	5708601000706
Grundfos Manufacturing Corp.	GMU/US	5708601000607	5708601000072
Peerless Pump Company	PPU/US	5708601001772	5708601001017
Yeomans Chicago Corporation	YCC/US	5708601001796	5708601001789

UNH - Message header

Description To head, identify and specify a message.

Definitions

	Element	EDIFACT	Grundfos specifics
0062	Message reference number	M an..14	Sender's unique message reference. Sequence number of the message in the interchange.
S009	Message identifier	M	
0065	Message type identifier	M an..6	ORDERS = Order message
0052	Message type version number	M an..3	D
0054	Message type release number	M an..3	96A
0051	Controlling agency	M an..2	UN
0057	Association assigned code	C an..6	Not used
0068	Common access reference	C an..35	Not used
S010	Status of the transfer	C	
0070	Sequence message transfer number	M n..2	Not used
0073	First/last sequence message transfer indication	C a1	Not used

Example

Example:
UNH+10+ORDERS:D:96A:UN'

BGM - Beginning of message

Description To indicate the type and function of a message and to transmit the identifying number.

Definitions

	Element	EDIFACT	Grundfos specifics
C002	Document/Message	M	
1001	Document/Message name, coded	M an..3	220 = Order
1131	Code list qualifier	C an..3	Not used
3055	Code list responsible agency, coded	C an..3	Not used
1000	Document/Message name	C an..35	Not used
1004	Document/Message number	C an..35	Order number assigned by document sender.
1225	Message function, coded	C an..3	Not used
4343	Response type, coded	C an..3	Blank = Acknowledgement (ORDERRSP) needed NA = No acknowledgement (ORDERRSP) needed

Example

Example:
BGM+220+01671727'

DTM - Date/time/period

Description To specify date, and/or time, or period.

Definitions

	Element	EDIFACT	Grundfos specifics
C507	Date/time/period	M	
2005	Date/time/period qualifier	M an..3	137 = Document date/time.
2380	Date/time/period	C an..35	Document date
2379	Date/time/period format qualifier	C an..3	102 = CCYYMMDD

Example

Example:
DTM+137:19990415:102'

NAD- Name and address

Description To specify the name and address and their related functions.

Definitions

	Element	EDIFACT	Grundfos specifics
3035	Party qualifier	M an..3	BY = Buyer DP = Delivery party SU = Supplier
C082	Party identification details	C	
3039	Party id, identification	M an..35	When 3035 = BY then Party identification
1131	Code list qualifier	C an..3	Not used
3055	Code list responsible agency, coded	C an..3	When 3035 = BY then 9 = EAN or ZZZ = Mutually defined
C058	Name and address	C	
3124	Name and address line	M an..35	When 3035 = SU then Company name
3124	Name and address line	C an..35	Additional company information
3124	Name and address line	C an..35	Additional company information
3124	Name and address line	C an..35	Additional company information
3124	Name and address line	C an..35	Additional information Unloading Point
C080	Party name	C	
3036	Party name	M an..35	When 3035 = DP then Company name
3036	Party name	C an..35	Not used
3036	Party name	C an..35	Not used
3036	Party name	C an..35	Not used
3036	Party name	C an..35	Not used
3045	Party name format, coded	C an..3	Not used

C059	Street	C	
3042	Street and number / p.o box	M an..35	When 3035 = DP then Street and number
3042	Street and number / p.o box	C an..35	Not used
3042	Street and number / p.o box	C an..35	Not used
3042	Street and number / p.o box	C an..35	Not used
3164	City name	C an..35	When 3035 = DP then City name
3229	Country sub-entity identification	C an..9	When 3035 = DP then Country sub-entity
3251	Postcode identification	C an..9	When 3035 = DP then Postal / Zip code
3207	Country code, coded	C an..3	When 3035 = DP then Country code ISO 3166

Example

Example:

NAD+BY+5708601000836::9'**NAD+SU++SANDVIK A/S'****NAD+DP+++GRUNDFOS A/S:8216 - Lager 0001 (Central lageret)+POUL DUE JENSENS VEJ 7+BJERRINGBRO++8850+DK'**

RFF – Reference (ADE)

Description To specify a reference.

Definitions

	Element	EDIFACT	Grundfos specifics
C506	Reference	M	
1153	Reference qualifier	M an..3	ADE = Account number
1154	Reference number	M an..35	Account number
1156	Line number	M an..6	Not used
4000	Reference version number	M an..35	Not used

Example

Example:
RFF+ADE:00000767'

****IMPORTANT****

!! IMPORTANT !!

If the Grundfos company uses only one supplier number this RFF segment is optional on the order response and invoice.

If more than one supplier number is used by the Grundfos company this RFF segment is mandatory and shall be returned in it's original form when the supplier is sending order response and invoices.

Recommended is to send this RFF segment to ensure invoicing on the correct account.

CTA – Contact information

Description To identify a person or a department to whom communication should be directed.

Definitions

	Element	EDIFACT	Grundfos specifics
3139	Contact function, coded	C an..3	When 3035 = BY then OC When 3035 = DP then GR
C056	Department or employee details	C	
3413	Department or employee identification	C an..17	Not used
3412	Department or employee	C an..35	When 3139 = OC then Contact person When 3139 = GR then Goods receiving contact

Example

Example:

CTA+OC+:JENS MØLLER'

CTA+GR+:8520 FFR / 8800 JSH'

IMPORTANT

!! IMPORTANT !!

The value of CTA+GR must be visible on the actual delivery on the goods, see ["Marking of goods"](#)

COM – Communication contact

Description To identify a communication number of a department or a person to whom communication should be directed.

Definitions

	Element	EDIFACT	Grundfos specifics
C076	Communication contact	M	
3148	Communication number	M an..25	When 3035 = BY then Telephone number for contact person
3155	Communication channel qualifier	M an..3	TE = Telephone

Example

Example:
COM+?+45 87501400:TE'

CUX – Currencies

Description To specify currencies used in the transaction and relevant details for the rate of exchange.

Definitions

	Element	EDIFACT	Grundfos specifics
C504	Currency details	C	
6347	Currency details qualifier	M an..3	2 = Reference currency
6345	Currency, coded	C an..3	ISO 4217 three alpha
6343	Currency qualifier	C an..3	9 = Order currency
6348	Currency rate base	C an..4	Not used
C504	Currency details	C	
6347	Currency details qualifier	M an..3	Not used
6345	Currency, coded	C an..3	Not used
6343	Currency qualifier	C an..3	Not used
6348	Currency rate base	C an..4	Not used
5402	Rate of exchange	C an..12	Not used
6341	Currency market exchange, coded	C an..3	Not used

Example

Example:
CUX+2:EUR:9'

TDT– Details of transport

Description To specify the mode and means of transport

Definitions

	Element	EDIFACT	Grundfos specifics
8051	Transport stage qualifier	M an..3	12 = At departure
8028	Conveyance reference number	C an..17	Not used
C220	Mode of transport	C	
8067	Mode of transport, coded	C an..3	0 = Transport mode not specified 1 = Maritime transport 2 = Rail transport 3 = Road transport 4 = Air transport 5 = Mail
8066	Mode of transport	C an..17	Not used
C228	Transport means	C	
8179	Type of means of transport identification	C an..8	Not used
8178	Type of means of transport	C an..17	Not used
C040	Carrier	C	
3127	Carrier identification	C an..173	Not used
1131	Code list qualifier	C an..3	Not used
3055	Codelist responsible agency, coded	C an..3	Not used
3128	Carrier name	C an..4	Not used
8101	Transit direction, coded	C an..3	Not used
C401	Excess transportation information	C	
8457	Excess transportation reason, coded	M an..3	Not used
8459	Excess transportation responsibility, coded	M an..3	Not used
7130	Customer authorization number	C an..17	Not used

C222	Transport identification	C	
8213	Id of means of transport identification	C an..9	Not used
1131	Code list qualifier	C an..3	Not used
3055	Code list responsible agency, coded	C an..3	Not used
8212	Id of the means of transport	C an..35	Not used
8453	Nationality of means of transport, coded	C an..3	Not used
8281	Transport ownership, coded	C an..3	Not used

Example

Example:

TDT+12++1'****IMPORTANT******!! IMPORTANT !!**

The TDT segment shall be returned in it's original form when the supplier is sending order responses.

LIN - Line item

Description To identify a line item and configuration.

Definitions

	Element	EDIFACT	Grundfos specifics
1082	Line item number	C n..6	Application generated number of the count of order lines
1229	Action request / notification, coded	C an..3	Not used
C212	Item number identification	C	
7140	Item number	C an..35	The number of the article being ordered. Grundfos' item number.
7143	Item number type, coded	C an..3	IN = Buyer's item number
1131	Code list qualifier	C an..3	Not used
3055	Code list responsible agency, coded	C an..3	Not used
C829	Sub-line information	C	
5495	Sub-line indicator, coded	C an..3	Not used
1082	Line item number	C n..6	Not used
1222	Configuration level	C n..2	Not used
7083	Configuration, coded	C an..3	Not used

Example

Example:

LIN+1++V0370246:IN'

PIA - Additional product id

Description To specify additional or substitutorial item identification codes.

Definitions

	Element	EDIFACT	Grundfos specifics
4347	Product id. function qualifier	M an..3	5 = Product identification
C212	Item number identification	M	
7140	Item number	C n..35	The number of the article being ordered. Suppliers article number.
7143	Item number type, coded	C an..3	SA = Supplier's article number
1131	Code list qualifier	C an..3	Not used
3055	Code list responsible agency, coded	C an..3	Not used
C212	Item number identification	C	
7140	Item number	C an..35	Not used
7143	Item number type, coded	C an..3	Not used
1131	Code list qualifier	C an..3	Not used
3055	Code list responsible agency, coded	C an..3	Not used
C212	Item number identification	C	
7140	Item number	C an..35	Not used
7143	Item number type, coded	C an..3	Not used
1131	Code list qualifier	C an..3	Not used
3055	Code list responsible agency, coded	C an..3	Not used
C212	Item number identification	C	
7140	Item number	C an..35	Not used
7143	Item number type, coded	C an..3	Not used
1131	Code list qualifier	C an..3	Not used

3055	Code list responsible agency, coded	C an..3	Not used
C212	Item number identification	C	
7140	Item number	C an..35	Not used
7143	Item number type, coded	C an..3	Not used
1131	Code list qualifier	C an..3	Not used
3055	Code list responsible agency, coded	C an..3	Not used

Example

Example:
[PIA+5+R142.0-16-11:SA'](#)

IMD - Item description

Description To describe an item in either an industry or free format.

Definitions

	Element	EDIFACT	Grundfos specifics
7077	Item description type, coded	C an..3	F = Free-form
7081	Item characteristics, coded	C an..3	Not used
C273	Item description	C	
7009	Item description identification	C an..17	Not used
1131	Code list qualifier	C an..3	Not used
3055	Code list responsible agency, coded	C an..3	Not used
7008	Item description	C an..35	Item description 1
7008	Item description	C an..35	Item description 2
3453	Language, coded	C an..3	Not used
7383	Surface/layer indicator, coded	C an..3	Not used

Example

Example:

IMD+F++:::According to drawing from 30.09.98 and:Change Note Nr. A10879'

QTY - Quantity

Description To specify a pertinent quantity

Definitions

	Element	EDIFACT	Grundfos specifics
C186	Quantity details	M	
6063	Quantity qualifier	M an..3	21 = Ordered quantity
6060	Quantity	M n..15	Quantity.
6411	Measure unit qualifier	C an..3	Common code from UN/CEFACT Recommendation 20

Example

Example:
QTY+21:5:PCE'

DTM - Date/time/period

Description To specify date, and/or time, or period.

Definitions	Element	EDIFACT	Grundfos specifics
C507	Date/time/period	M	
2005	Date/time/period qualifier	M an..3	35 = Delivery date/time, actual. (ETA date) 11 = Despatch date/time. (ETD date)
2380	Date/time/period	C an..35	Date
2379	Date/time/period format qualifier	C an..3	102 = CCYYMMDD

Example Example:
DTM+35:19990420:102'
DTM+11:19990420:102'

PRI - Price details

Description To specify price information.

Definitions

	Element	EDIFACT	Grundfos specifics
C509	Price information	C	
5125	Price qualifier	M an..3	AAA = Calculation net (Net Unit Price)
5118	Price	C n..15	Price
5375	Price type, coded	C an..3	CT = Contract
5387	Price type qualifier	C an..3	Not used
5284	Unit price basis	C an..9	Basis number
6411	Measure unit qualifier	C an..3	Common code from UN/CEFACT Recommendation 20
5213	Sub-line price change, coded	C an..3	Not used

Example

Example:
[PRI+AAA:9.75:CT::1:PCE'](#)

RFF – Reference (CO+AAL)

Description To specify a reference

Definitions

	Element	EDIFACT	Grundfos specifics
C506	Reference	M	
1153	Reference qualifier	M an..3	CO = Customer order number AAL = Drawing number
1154	Reference number	M an..35	When 1153 = CO then order number When 1153 = AAL then drawing number
1156	Line number	M an..6	When 1153 = CO then line number on the order
4000	Reference version number	M an..35	When 1153 = AAL then change note number

Example

Example:

RFF+CO:01671727:1'

RFF+AAL:V0370246::A10879'

****IMPORTANT****

!! IMPORTANT !!

The RFF+CO segment shall be returned in it's original form when the supplier is sending order responses and invoices.

Element 1154 in this segment contains the value from element 1004 in the BGM segment.

Element 1156 in this segment contains the value from element 1082 in the LIN segment.

This is relevant for RFF+ CO only – not RFF+AAL

UNS - Section control

Description To separate header, detail and summary sections of a message.

Definitions

	Element	EDIFACT	Grundfos specifics
0081	Section identification	M a..1	S = Detail/summary section separation

Example Example:
UNS+S'

UNT- Message trailer

Description To end and check completeness of a message.

Definitions

	Element	EDIFACT	Grundfos specifics
0074	Number of segments in a message	M n..6	The total number of segments in the message is detailed here.
0062	Message reference number	M an..14	The message reference number detailed here should equal the one specified in the UNH segment.

Example

Example:
UNT+22+10'

UNZ - Interchange trailer

Description To separate header, detail and summary sections of a message.

Definitions

	Element	EDIFACT	Grundfos specifics
0036	Interchange control count	M an..6	The count of the number of messages.
0020	Interchange control reference	M an..14	Shall be identical to 0020 in UNB segment.

Example

Example:
UNZ+1+10'

Order message example

Order message example

UNA:+.? '
UNB+UNOC:3+5708601000836:14+5790000274017:14+990419:1039+10++ORDERS++++1'
UNH+10+ORDERS:D:96A:UN'
BGM+220+01671727'
DTM+137:19990415:102'
NAD+BY+5708601000836::9'
CTA+OC+:JENS MØLLER'
COM+?+45 87501400:TE'
NAD+SU++SANDVIK A/S'
RFF+ADE:00000767'
NAD+DP+++GRUNDFOS A/S:8216 - Lager 0001 (Central lageret)+POUL DUE JENSENS VEJ
7+BJERRINGBRO++8850+DK'
CTA+GR+:8520 JMS / 8800 JSH'
CUX+2:EUR:9'
TDT+12++1'
LIN+1++V0370246:IN'
PIA+5+R142.0-16-11:SA'
IMD+F+++ According to drawing from 30.09.98 and:Change Note Nr. A10879'
QTY+21:5:PCE'
DTM+35:19990420:102'
PRI+AAA:9.75:CT::1:PCE'
RFF+AAL:V0370246::A10879'
RFF+CO:01671727:1'
UNS+S'
UNT+22+10'
UNZ+1+10'
